



ASSET PROTECTION PRODUCT LINE

Your One Stop Solution

ThankYOU

Thank you for taking the time to consider our SBI Industrial Asset Protection Line. We look forward to the opportunity to supply you with the best products our 14 years of experience has taught us to make, and the best service we've learned how to offer.

To our valued clients, thank you for your business and trust in us to protect and safe guard your facilities, fixtures, customers and employees.

To our suppliers and service providers, thank you for your continued support in making us the business we've become.

To our Installer Network, thank you for the countless days on the road and your professionalism and dedication to quality installations every time.

To our team, we can't thank you enough. Your dedication, perseverance and individual skills result in the industry leading products we make today.

My true appreciation and gratitude

John

John L. Krawietz

We are proud to introduce our new catalog that features our Asset Protection, A/C Cage and Gas Cage product lines. We've added and improved many products and services that include:

- Re-Engineered Pallet Rack Pro with additional available finishes.
- New Box Rail Guards in 7", 20" and 48" heights.
- New Access Managers that ensure rack access with straddle lifts.
- AutoCAD design and planning services with secure FTP file exchange.
- Industry leading 5-Year Limited Product Warranty.

Visit our website for additional product information:

- Product Installation Instructions.
- Tutorial Videos.
- Downloadable PDF Catalogs and Product Cut-Sheets.



SBI Industrial LLC
21739 Highway 64
Canton, Texas 75103
866-650-7827



Design SERVICES

The next step in fulfilling your asset protection goals is achieved by our offering of a comprehensive planning and installation service. We can create a detailed plan, equipment list, and provide you with a quotation that covers everything from AutoCad drawings to the finished installation of your project.

Take Off/Quote

Contact Us

Call at 1-866-650-7827, fax at 972-284-1257 or contact us by email through our website and let us know about your project.

Already Know What You Need?

Send us your Bill of Materials, Parts List or Project Plan and we'll provide you with a quote for your project.

Need to Create a Plan?

Contact us about transferring your AutoCAD Plan over the Internet to our secure FTP Site and we'll create an Asset Protection Plan for you.

Order and Install

Once you've placed an order, we'll work with you to schedule your installation by one of our Certified Installer Network members.



Installation SERVICES

Our Installer Network includes Certified Crews located throughout the U.S.

- ✓ Arkansas
- ✓ California
- ✓ Colorado
- ✓ Michigan
- ✓ New Mexico
- ✓ Oklahoma



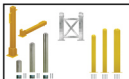
- ✓ Texas
- ✓ Dallas
- ✓ Houston
- ✓ San Antonio

21739 State Highway 64
Canton, Texas 75103
866-650-7827
www.sbiindustrial.com

NOTES

Product LINE

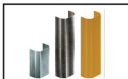
The purpose of asset protection is to save you time and money. Installing the appropriate type of products throughout your facility can eliminate costly repairs and maintenance, provide safety for both your employees and customers, as well as promote efficiency and productivity in your operations.



BOLLARD GUARDS PG 1-8



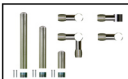
C-SHAPE GUARDS PG 3-4



ANGLED GUARDS PG 9-10



SS FLOOR RAIL PG 11-12



H.I.P.S. PG 13-14



BOX RAIL 7 PG 15-16



BOX RAIL 20 PG 17-18



BOX RAIL 48 PG 19-20



PALLET RACK PRO PG 21-22



ACCESS MANAGERS PG 23-24



A/C CAGES PG 25-28



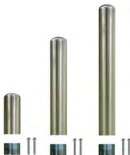
GAS CAGES PG 31-35

Bollard GUARDS Consealed Mount

Our durable Bollard Guards are available in a range of size options as well as finish options that include Stainless Steel and Hot-Dipped Galvanized.

Part Numbers

SS40-10TB	10" X 4" OD SS
SS40-24TB	24" X 4" OD SS
SS40-32TB	32" X 4" OD SS
SS40-32TB	32" X 3" OD SS
GALV-24TB	24" X 4" OD GALV
GALV-32TB	32" X 4" OD GALV
GALV-42TB	42" X 5.5" OD GALV



Features

- STAINLESS STEEL
- GALVANIZED
- FITS ANY STORE DECOR PACKAGE

Uses

- SALES FLOOR
- STORAGE ROOMS
- PREP AREAS
- CASE PROTECTION
- HIGH TRAFFIC
- MEDIUM IMPACT



4" OD X 10"
4" OD X 24"
4" OD X 32"



3" OD X 32"



C-Shape CORNER GUARDS

Our Stainless Steel C-Shaped corner guards are designed especially for providing removable protection for refrigeration and display cases. Decorative Stainless Steel band adds additional strength and protection at impact zone.

Part Numbers

SSCG-012	Stainless Steel 12"
SSCG-018	Stainless Steel 18"
SSCG-024	Stainless Steel 24"
SSCG-012-BLK	Stainless Steel 12" Powder Coat Black
SSCG-018-BLK	Stainless Steel 18" Powder Coat Black
SSCG-024-BLK	Stainless Steel 24" Powder Coat Black



Features

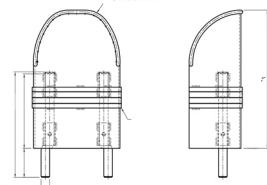
- STAINLESS STEEL
- GALVANIZED
- FITS ANY STORE DECOR PACKAGE

Uses

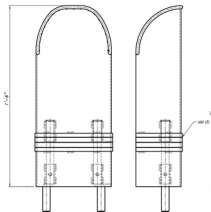
- SALES FLOOR
- STORAGE ROOMS
- PREP AREAS
- CASE PROTECTION
- HIGH TRAFFIC
- MEDIUM IMPACT



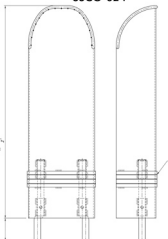
SSCG-012



SSCG-018



SSCG-024



Bollard GUARDS Bolt-Down Plate Fold-Down Dock

Our Bolt-Down Bollard Guards are available in a range of size options in a Powder Coat Yellow finish and are ideal for High Impact / High Traffic situations.

Part Numbers

110-436-PCY	4" OD X 36"
110-442-PCY	4" OD X 42"
110-642-PCY	6" OD X 42"
FDBL-42YL	4" SQ X 42"

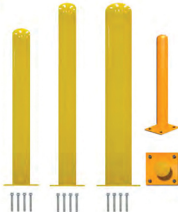


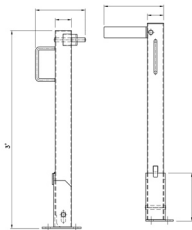
Features

- POWDER COAT YELLOW FINISH
- BOLT-DOWN 1/2" THICK PLATES
- SCHEDULE 40 STEEL CONSTRUCTION

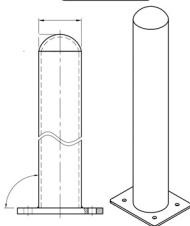
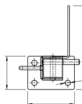
Uses

- SALES FLOOR
- STORAGE ROOMS
- PREP AREAS
- CASE PROTECTION
- FIXTURE PROTECTION
- WALL PROTECTION
- DOOR PROTECTION
- HIGH TRAFFIC
- HIGH IMPACT





4" OD X 36"
4" OD X 42"
6" OD X 42"



Bollard GUARDS X-FRAME

Our X-Frame bollards are designed for High-Impact exterior use protection. They are ideal for Store Fronts, C-Stores, Gas Cage and Gas Pump protection.

Part Numbers

SMXF48-187	30" X 3"
SMXF48-025	30" X 3"
CDXF-6-187	30" X 6"
CDXF-6-025	30" X 6"

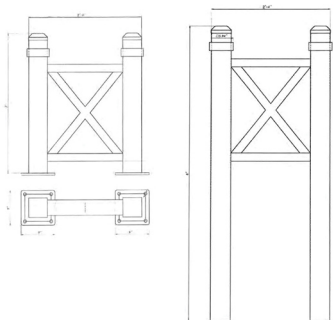
Features

- HOT DIP GALVANIZED
- 3" ABOVE GRADE
- 6" X 6" POSTS
- SURFACE MOUNT OPTION
- CORE DRILLED OPTION
- 0.187" CONSTRUCTION
- 0.25" CONSTRUCTION

Uses

- EXTERIOR USE
- STORE FRONT PROTECTION
- C-STORE PROTECTION
- GAS PUMP PROTECTION
- GAS CAGE PROTECTION
- HIGH IMPACT



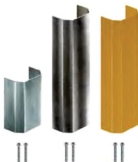


Angled GUARDS

Our Angled Guards are designed especially for protecting Equipment Legs, Wall Corners and Utilities such as Plumbing Drain Pipes, Water Supply Lines, Electrical Conduits and PVC Lines.

Part Numbers

GV7-AWCG	7" Galvanized
SS18-AWCG	18" Stainless Steel
YL18-AWCG	18" Powder Coat



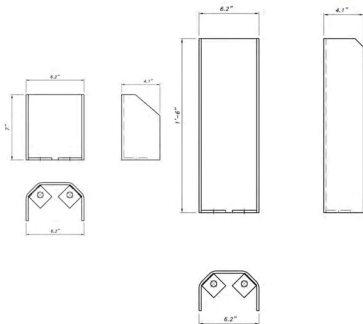
Features

- STAINLESS STEEL
- GALVANIZED
- POWDER COAT YELLOW
- 7" and 18" TALL

Uses

- SALES FLOOR
- STORAGE ROOMS
- PREP AREAS
- LEG PROTECTION
- FIXTURE PROTECTION
- WALL CORNER PROTECTION
- HIGH TRAFFIC
- MEDIUM IMPACT





FloorRail SYSTEM

Our Floor Rail System is ideal for protecting Refrigerated Cases on the Sales Floor from shopping cart traffic as well as restocking traffic and materials handling equipment.

Part Numbers

SSFR-4FT	4' X 2" OD SS
SSFR-4CTF	4' X 2" OD SS
SSFR-8FT	8' X 2" OD SS
SSFR-8CTF	8' X 2" OD SS
SSFR-10FT	10' X 2" OD SS
SS90-1212	1' X 1' X 2" OD SS
GALVFR-8FT	8' X 2" OD GALV
HDGALV-90	1' X 1' X 2" OD GALV

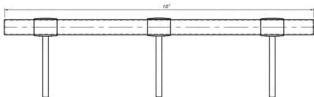
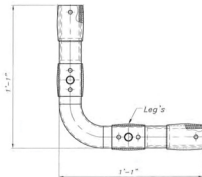
Features

- STAINLESS STEEL
- GALVANIZED
- CONCEALED MOUNT

Uses

- SALES FLOOR
- CASE PROTECTION
- FIXTURE PROTECTION
- HIGH TRAFFIC
- MEDIUM IMPACT





H.I.P.S. SYSTEM

H.I.P.S. is our High Impact Protection System that ties together Bollards, 90 Degree Corners and Floor Rails to form an integrated protection barrier that is stronger than a system of individual parts.

Part Numbers

SS40-10TB	10" X 4" OD SS
SS40-24TB	24" X 4" OD SS
SS40-32TB	32" X 4" OD SS
SS1x1-HIPS	1" X 1" X 2" OD SS
SSHIP-1WAY	1" X 2" OD SS

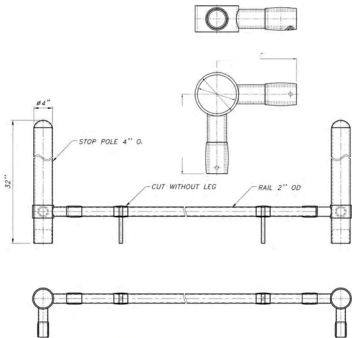
Features

- STAINLESS STEEL
- 10", 24" & 32" BOLLARDS
- 90 DEGREE CORNERS

Uses

- SALES FLOOR
- CASE PROTECTION
- FIXTURE PROTECTION
- HIGH TRAFFIC
- HIGH IMPACT

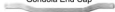




BoxRAIL 7

Our Box Rail 7 is a multi-purpose Floor Rail Guard that's ideal when durable protection is needed but easy access is required.

Gondola End Cap



Starter Piece



* GONDOLA END CAP PALLET DROP

Part Numbers

BOX7-90CORNER	7" X 1' GALV
BOX7-GONDOLA4	7" X 4' GALV
BOX7-GONDOLA6	7" X 6' GALV
BOX7-SK4	7" X 4' GALV
BOX7-BRAIL	7" X 8' GALV
BOX7-BRACKET	7" X 10" GALV
BOX7-BRACKETM	7" X 10" GALV

Features

- GALVANIZED
- SURFACE MOUNT
- TAPERED ENDS
- REMOVABLE RAILS



Bracket End

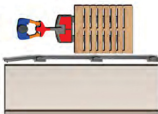


Bracket Middle

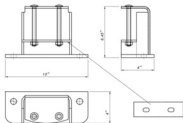


Uses

- SALES FLOOR
- STORAGE ROOMS
- PREP AREAS
- EASY ACCESS
- FIXTURE PROTECTION
- GONDOLA PROTECTION
- HIGH TRAFFIC
- HIGH IMPACT
- LOW STACK



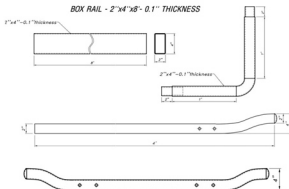
Bracket End



Bracket Middle



BOX RAIL - 2"x4"x8' - 0.1" THICKNESS



BoxRAIL 20

Our Box Rail 20 is a multi-purpose Fence Rail Guard that's ideal when durable protection is needed but easy access is required.



Part Numbers

BR-20-5RAIL	6" X 5' GALV
BR-20-PR	4" X 4" X 20"
BR-20-PL	4" X 4" X 20"
BR-20-P90	4" X 4" X 20"
BR-20-P2WAY	4" X 4" X 20"

Features

- GALVANIZED
- POWDER COAT YELLOW
- SURFACE MOUNT
- REMOVABLE RAILS

Uses

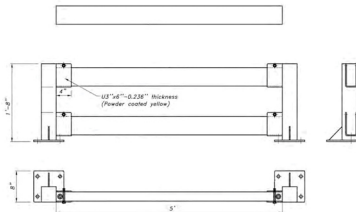
- STORAGE ROOMS
- WAREHOUSE AISLES
- EASY ACCESS
- FIXTURE PROTECTION
- PANEL PROTECTION
- HIGH TRAFFIC
- HIGH IMPACT
- MEDIUM STACK

- *EASY ACCESS WHEN REQUIRED*

- *FLUSH ON AISLE SIDE*

- *REMOVABLE RAILS*





BoxRAIL 48

Our Box Rail 48 is a multi-purpose Fence Rail Guard that's ideal when durable protection is needed but easy access is required.



Part Numbers

BR-48-5RAIL	6" X 5' GALV
BR-48-PR	4" X 4" X 48"
BR-48-PL	4" X 4" X 48"
BR-48-P90	4" X 4" X 48"
BR-48-P2WAY	4" X 4" X 48"

Features

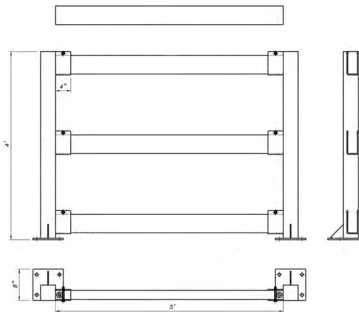
- GALVANIZED
- POWDER COAT YELLOW
- SURFACE MOUNT
- REMOVABLE RAILS



Uses

- STORAGE ROOMS
- WAREHOUSE AISLES
- EASY ACCESS
- FIXTURE PROTECTION
- PANEL PROTECTION
- HIGH TRAFFIC
- HIGH IMPACT
- HIGH STACK





PalletRack PRO

Our Pallet Rack Pro provides employee safety by protecting both the front and side of the rack frame while still allowing rack access by fitting tight to the frame post.

Part Numbers

- 110-PRP-4 FOR LOCK-UP CAGE RACKS
- 110-PRP-12 FOR STANDARD RACKS
- 110-MSP-4 FOR MAXI-SPAN RACKS

Features

- GALVANIZED
- POWDER COAT
- 4" & 12" HEIGHTS
- 3-POINT ANCHOR
- NO-WELD SHEET STEEL

Uses

- STORAGE ROOMS
- WAREHOUSES
- EASY ACCESS
- RACK PROTECTION
- EMPLOYEE SAFETY
- HIGH IMPACT

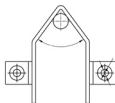
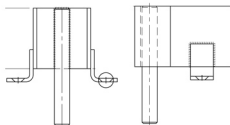
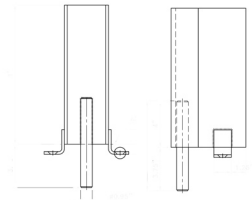


• PROTECTS FROM SIDE IMPACT



• FITS TIGHT TO RACK POST





Access MANAGERS

Our Access Managers save time, space and money by ensuring straddle lifts can place or retrieve work loads in both palletized and non-palletized rack bays.

Part Numbers

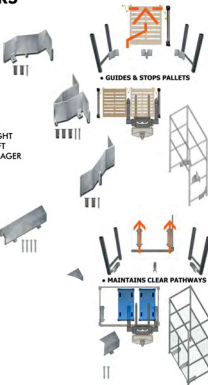
PIG-CSU-YWL	CENTER STOP UNIT
PIG-SSUR	SIDE STOP UNIT RIGHT
PIG-SSUL	SIDE STOP UNIT LEFT
PIG-RAM	RACK ACCESS MANAGER

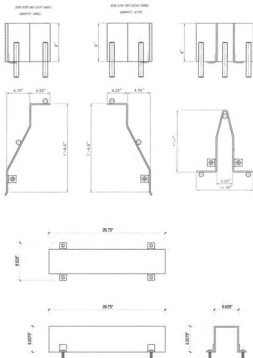
Features

- NO-WELD SHEET STEEL
- GALVANIZED OR POWDER COAT
- DURABLE FLOOR ANCHORS

Uses

- SALES FLOOR
- STORAGE ROOMS
- PREP AREAS
- CASE PROTECTION
- HIGH TRAFFIC
- MEDIUM IMPACT





A/C CAGES

Our A/C Cages provide protection for your condenser units from theft and severe weather damage. They use a patent pending removable panel design that makes access and installation quick and simple.

Part Numbers

65-33-BDDM	3' X 3' X 3'
65-44-BDDM	4' X 4' X 4'
65-754-RTC	5' X 7' X 4'
65-965-RTC	6' X 9' X 5'
65-1284-RTC	8' X 12' X 4.5'

Features

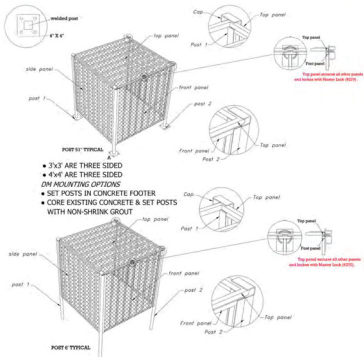
- GALVANIZED
- POWDER COAT BLACK
- VANDAL PROOF PUCK LOCKS
- BOLT-DOWN LEG ANCHORS
- SURFACE OR EMBEDDED MOUNT

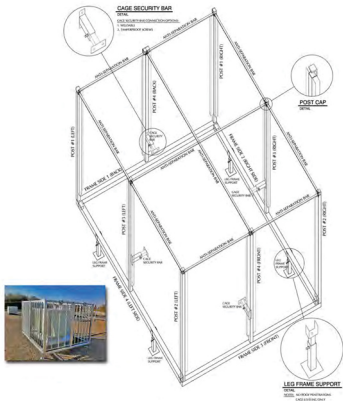


NON-PENETRATING ROOF MOUNTS

BLACK POWDER COAT
BLACK POWDER COAT
GALVANIZED
GALVANIZED
GALVANIZED







Gas CAGES

Our Gas and Propane Cages provide security and safety for your tank sales program. They are available in multiple tank capacity and color finish options.

Part Numbers

FCC-33-4	30" w x 30" d x 38" h	4 33lb Bottles
FCC-33-6	30" w x 30" d x 53" h	6 33lb Bottles
FCC-33-8	30" w x 30" d x 70" h	8 33lb Bottles
FCC-33-12	44" w x 30" d x 68" h	12 33lb Bottles
FCC-33-16	60" w x 30" d x 68" h	16 33lb Bottles
FCC-33-18	90" w x 30" d x 68" h	18 33lb Bottles
CEC-20-4	30" w x 30" d x 38" h	4 20lb Bottles
CEC-20-12	44" w x 30" d x 53" h	12 20lb Bottles
CEC-20-18	44" w x 30" d x 68" h	18 20lb Bottles

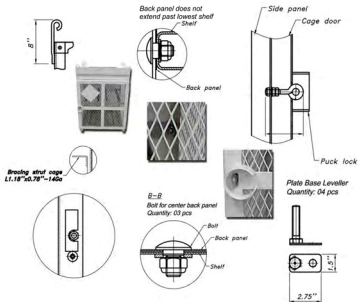


Features

- GALVANIZED
- POWDER COAT YELLOW
- POWDER COAT WHITE
- POWDER COAT BLUE
- BOLT-DOWN LEG ANCHORS
- VANDAL PROOF PUCK LOCKS
- VANDAL PROOF HINGES

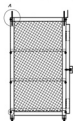
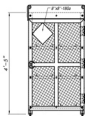
33lb Cylinder Storage Cages



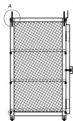
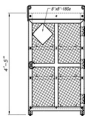


Common DETAILS Gas CAGES

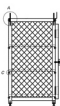
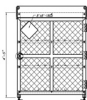
33lb Bottle Cage FCC-33-6



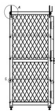
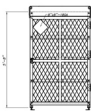
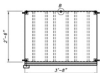
33lb Bottle Cage FCC-33-8



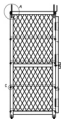
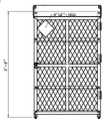
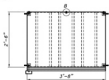
33lb Bottle Cage FCC-33-9



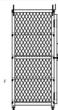
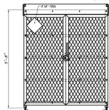
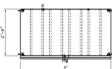
33lb Bottle Cage FCC-33-12



33lb Bottle Cage FCC-33-12



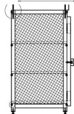
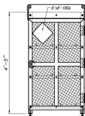
33lb Bottle Cage FCC-33-16



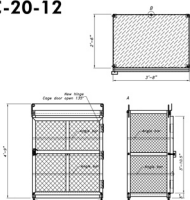
33lb Bottle Cage FCC-33-4



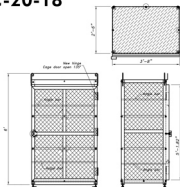
20lb Bottle Cage CEC-20-4



20lb Bottle Cage CEC-20-12



20lb Bottle Cage CEC-20-18



Bollard GUARDS

Part #	Description	Size	Material/Finish
SS40-10TB	Bollard with Threaded Base	10" x 4'00	Stainless Steel
SS40-24TB	Bollard with Threaded Base	24" x 4'00	Stainless Steel
SS40-32TB	Bollard with Threaded Base	32" x 4'00	Stainless Steel
GALV-24TB	Bollard with Threaded Base	24" x 4'00	Galvanized
GALV-32TB	Bollard with Threaded Base	32" x 4'00	Galvanized
GALV-42TB	Bollard with Threaded Base	42" x 5.5'00	Galvanized
110-436-PCY	Bolt Down 36" x 4' 00 Bollard	36" x 4'00	Powder Coat
110-442-PCY	Bolt Down 42" x 4' 00 Bollard	42" x 4'00	Powder Coat
110-442-PCY	Bolt Down 42" x 6' 00 Bollard	42" x 6'00	Powder Coat
FD8L-42YL	Fold-Down Deck Door Bollard	42" x 4'00	Prime Coated
SMBF48-18T	Surface Mount Bolt Down X-Frame Bollard	38" x 3' 00	Prime Coated
SMBF48-025	Surface Mount Bolt Down X-Frame Bollard	38" x 3' 00	Prime Coated
CD8F-6-18T	Core Drilled X-Frame Bollard	38" x 6' 00	Prime Coated
CD8F-6-025	Core Drilled X-Frame Bollard	38" x 6' 00	Prime Coated

C-Shape GUARDS

Part #	Description	Size	Material/Finish
SSCG-012	Stainless Steel 12" C-Shaped Guard	12"	Stainless Steel
SSCG-018	Stainless Steel 18" C-Shaped Guard	18"	Stainless Steel
SSCG-024	Stainless Steel 24" C-Shaped Guard	24"	Stainless Steel
SSCG-012-BLK	Stainless Steel 12" C-Shaped Guard Powder Coat Black	12"	Black Powder Coat
SSCG-018-BLK	Stainless Steel 18" C-Shaped Guard Powder Coat Black	18"	Black Powder Coat
SSCG-024-BLK	Stainless Steel 24" C-Shaped Guard Powder Coat Black	24"	Black Powder Coat

Angled GUARDS

Part #	Description	Size	Material/Finish
GW7-AWCG	Galvanized 7" Angled Guard	7"	Galvanized
SS18-AWCG	Stainless Steel 18" Angled Guard	18"	Stainless Steel
YL18-AWCG	Yellow Powder Coat 18" Angled Guard	18"	Powder Coat
UTG-24YL	Floor Utilities Angled Guard	7" x 24"	Powder Coat

Floor Rail SYSTEM

Part #	Description	Size	Material/Finish
SSFR-4FT	Stainless Steel 4' Floor Rail	4' x 2' 00	Stainless Steel
SSFR-4CFT	Stainless Steel 4' Cut to Fit Floor Rail	4' x 2' 00	Stainless Steel
SSFR-8FT	Stainless Steel 8' Floor Rail	8' x 2' 00	Stainless Steel
SSFR-8CFT	Stainless Steel 8' Cut to Fit Floor Rail	8' x 2' 00	Stainless Steel
SSFR-10FT	Stainless Steel 10' Floor Rail	10' x 2' 00	Stainless Steel
SSFR-1212	Stainless Steel 90 Degree Corner Floor Rail	1' x 1' x 2' 00	Stainless Steel
GALVFR-8FT	Galvanized 8' Floor Rail	8' x 2' 00	Galvanized
HDGALV-90DEGREE	Galvanized 90 Degree Corner Floor Rail	1' x 1' x 2' 00	Galvanized

SBI Industrial LLC
 21739 Highway 64
 Canton, Texas 75103
 866-650-7827
www.sbiindustrial.com



H.I.P.S			
Part #	Description	Size	Material/Finish
SS40-10TB	Bollard with Threaded Base	10" x 4" 00	Stainless Steel
SS40-24TB	Bollard with Threaded Base	24" x 4" 00	Stainless Steel
SS40-32TB	Bollard with Threaded Base	32" x 4" 00	Stainless Steel
SS1x1-HIPS	Stainless Steel 90 Degree Corner Bollard Collar	1" x 1" x 2" 00	Stainless Steel
SSHP-1-WAY	Stainless Steel 1-Way Bollard Collar	1" x 2" 00	Stainless Steel

Box RAIL 7			
Part #	Description	Size	Material/Finish
B0X7-90CORNER	Box Rail 7" 90 Degree Corner Rail	7" x 1"	Galvanized
B0X7-GONDOLA4	Box Rail 7" 4" Gondola End Cap	7" x 4"	Galvanized
B0X7-GONDOLA6	Box Rail 7" 6" Gondola End Cap	7" x 6"	Galvanized
B0X7-SK4	Box Rail 4" Rail Starter Kit	7" x 4"	Galvanized
B0X7-BRAIL	Box Rail 7" 8" Rail	7" x 8"	Galvanized
B0X7-BRACKET	Box Rail 7" 8" Floor Bracket Standard	7" x 18"	Galvanized
B0X7-BRACKETM	Box Rail 7" 8" Floor Bracket Middle	7" x 18"	Galvanized
B0X7-REC	Box Rail 7" Rail End Cap	7" x 1"	Galvanized

Box RAIL 20			
Part #	Description	Size	Material/Finish
BR-20-SRAIL	Box Rail 20" 5" Rail [set of 2]	6" x 5"	Galvanized
BR-20-PR	Box Rail 20" Post Right-Hand	4" x 4" x 4"	Galv Powder Coat
BR-20-PL	Box Rail 20" Post Left-Hand	4" x 4" x 20"	Galv Powder Coat
BR-20-P90	Box Rail 20" 90 Degree Corner	4" x 4" x 20"	Galv Powder Coat
BR-20-PWXY	Box Rail 20" Post 2-Way 180 Degree	4" x 4" x 20"	Galv Powder Coat

Box RAIL 20			
Part #	Description	Size	Material/Finish
BR-48-SRAIL	Box Rail 48" 5" Rail [set of 2]	6" x 5"	Galvanized
BR-48-PR	Box Rail 48" Post Right-Hand	4" x 4" x 48"	Galv Powder Coat
BR-48-PL	Box Rail 48" Post Left-Hand	4" x 4" x 48"	Galv Powder Coat
BR-48-P90	Box Rail 48" 90 Degree Corner	4" x 4" x 48"	Galv Powder Coat
BR-48-PWXY	Box Rail 48" Post 2-Way 180 Degree	4" x 4" x 48"	Galv Powder Coat

SBI Industrial LLC
21739 Highway 64
Canton, Texas 75103
866-650-7827
www.sbiindustrial.com



Pallet Rack PRO

Part #	Description	Size	Material/Finish
110-PRP-4	Pallet Rack Pro for Lock-up Cage Racks	4" Tall	Galv or Powder Coat
110-PRP-12	Pallet Rack Pro for Standard Racks	12" Tall	Galv or Powder Coat
110-MSP-4	Maxi-Span Pro for Maxi-Span Racks	4" Tall	Powder Coat

Access MANAGEMENT

Part #	Description	Size	Material/Finish
PIG-CSU-YWL	PI G.S System Center Stop Unit	8" Tall	Galv or Powder Coat
PIG-SSUR	PI G.S System Side Stop Unit Right	8" Tall	Galv or Powder Coat
PIG-SSUL	PI G.S System Side Stop Unit Left	8" Tall	Powder Coat
PIG-RAIN	Rack Access Manager	5.5" w x 27" d x 5.5" h	Powder Coat

Gas Tank CAGES

Part #	Description	Size	Material/Finish
FCC-33-4	Propane Tank Cage / 4 Capacity	30" w x 30" d x 38" h	Powder Coat
FCC-33-6	Propane Tank Cage / 6 Capacity	30" w x 30" d x 53" h	Powder Coat
FCC-33-9	Propane Tank Cage / 9 Capacity	44" w x 30" d x 53" h	Powder Coat
FCC-33-12	Propane Tank Cage / 12 Capacity	44" w x 30" d x 68" h	Powder Coat
FCC-33-16	Propane Tank Cage / 16 Capacity	60" w x 30" d x 68" h	Powder Coat
FCC-33-18	Propane Tank Cage / 18 Capacity	90" w x 30" d x 53" h	Powder Coat
CEC-29-12	Propane Tank Cage / 12 Capacity	44" w x 30" d x 53" h	Powder Coat
CEC-29-18	Propane Tank Cage / 18 Capacity	44" w x 30" d x 68" h	Powder Coat

A/C CAGES

Part #	Description	Size	Material/Finish
65-33-BDDM	A/C Cage Kit	3' x 3' x 3'	Black Powder Coat
65-44-BDDM	A/C Cage Kit	4' x 4' x 4'	Black Powder Coat
65-754-R3C	A/C Cage Kit	5' x 7' x 4'	Black Powder Coat
65-965-R3C	A/C Cage Kit	6' x 9' x 5'	Galvanized
65-1204-R3C	A/C Cage Kit	8' x 12' x 4.5'	Galvanized

Our Products can be Powder Coated
to match your Brand Image.



Contact us with your PMS numbers.

SBI Industrial LLC
21739 Highway 64
Canton, Texas 75103
866-650-7827
www.sbiindustrial.com

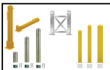




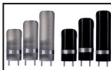
ASSET PROTECTION PRODUCT LINE

*Your One
Stop Solution*

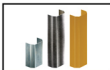
21739 Highway 64
Canton, TX 75103
866-650-7827
www.sbiindustrial.com



BOLLARD GUARDS



BOX RAIL 48



ANGLED GUARDS



SS FLOOR RAIL



H.I.P.S.



BOX RAIL 7



BOX RAIL 20



BOX RAIL 48



PALLET RACK PRO



ACCESS MANAGERS



A/C CAGES



GAS CAGES